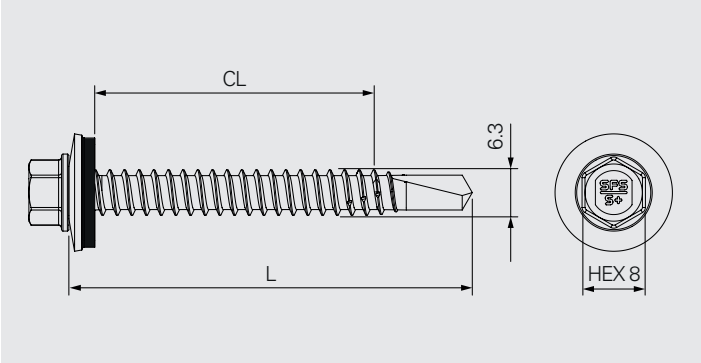
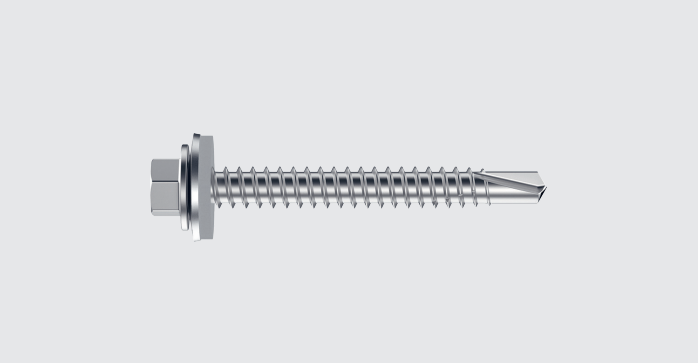


SX5-6.3



Application

Fastening of bracket through cement bonded particle board to steel stud

Component 1 (t _i)		Component 2 (t _{ii})	
Bracket		Steel	1.2–3.0
Pre-drill Ø	6.5		
Cement bonded Particle board	≤16.0		

Fastener material

Fastener: Austenitic stainless steel A4, case hardened drill point
Washer: Austenitic stainless steel A4 with EPDM-seal

Approvals

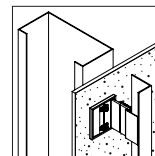
ETA-22/0793

Features and Benefits

- Self drilling fastener suitable for fastening bracket through cement bonded particle board sheeting onto steel stud
- Penetrates board and substructure in one operation without pre-drilling
- Versatile applications possible given by the large clamping range
- Optical recognition of whether fastener is properly tightened thanks to the washer

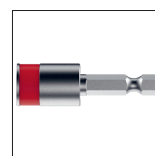
Documentation

Approval document (ETA) | Declaration of performance (DoP)



Fastener in A4 onto steel

Product code	PU	L	CL	
SX5/36-S16/A4-6,3×55-A4	250	55	0-36	1570614



Accessories/Ancillaries

Product code	PU	L	Drive	Head drive	
E308-1/4"-50	1	50	1/4"	HEX8	1646160