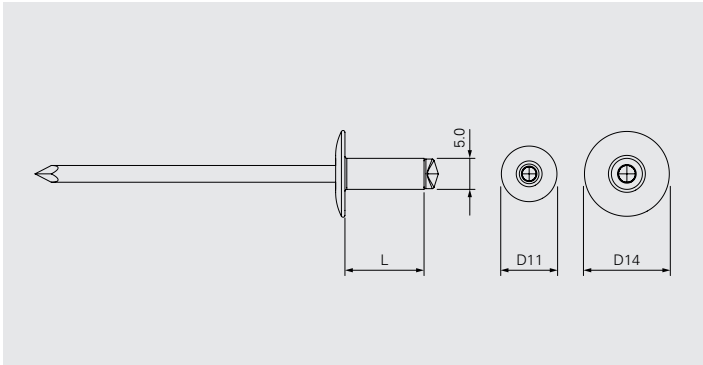
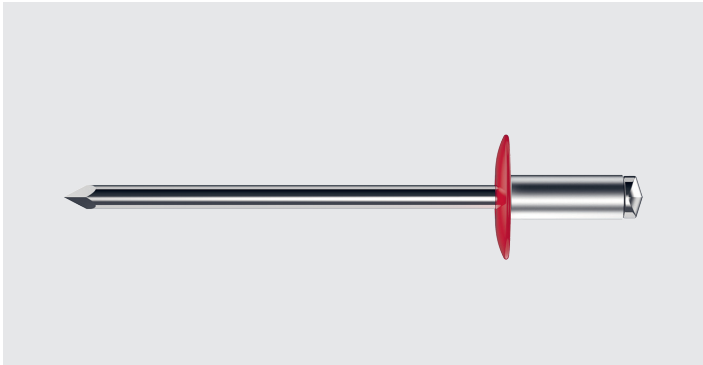


ASO-5.0



Application

Fastening of cladding panel to aluminium profile

Component 1 (t _i)	Component 2 (t _{ii})	
Cladding panel	Aluminium	≥1.0
	Pre-drill Ø	5.1

Fastener material

Body: Aluminium AlMg3
Mandrel: Austenitic stainless steel A2

Approvals

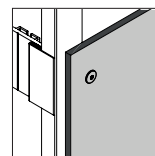
ETA-21/0951

Features and Benefits

- Blind rivet suitable for installation of pre-drilled cladding panels onto pre-drilled aluminium structure
- High clamping range with clamping force independent of the clamping thickness
- Non-detachable and vibration-resistant connection

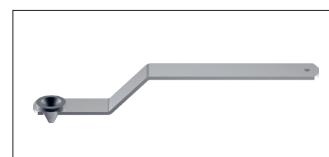
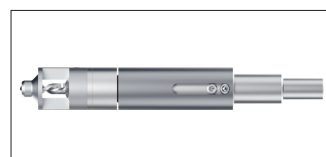
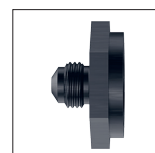
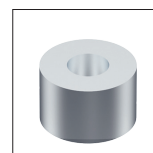
Documentation

Approval document (ETA)



Blind rivet in aluminium onto aluminium

Product code	PU	L	CL	Head	Blank	Coloured
ASO-D11-50080	250	8	2.0–4.5	D11	-	1363862
ASO-D11-50100		10	2.0–6.0		-	1363863
ASO-D11-50120		12	2.0–8.0		262251	1363864
ASO-D11-50140		14	4.0–10.0		1208418	1363865
ASO-D11-50160		16	6.0–12.0		1208450	1363868
ASO-D14-50080		8	2.0–4.5	D14	-	1470880
ASO-D14-50100		10	2.0–6.0		-	1363870
ASO-D14-50120		12	2.0–8.0		-	1363881
ASO-D14-50140		14	4.0–10.0		-	1363882
ASO-D14-50160		16	6.0–12.0		1270352	1363883



Accessories/Ancillaries

Product code	PU	Pre-drill Ø panel	
AccuBird®Pro	1	–	1679661
FP-A Sleeves	–		–
NOSEPIECE-MOVING-POINT AP/ASO	1		974620
DG-146×20-7,0		7.0–7.9	1320657
DG-146×20-8,0		8.0–8.9	1320658
DG-146×20-9,0		9.0–9.9	1320659
DG-146×20-10,0		10.0–10.9	1321704
ZL-5,1/7-18		7.0–18.0	701532