



**SFS**

# Dyna mic

Universal hinge range for PVC-U, aluminium and timber

# 3D





# Dynamic 3D universal hinge range groove 16/20/24

## Aesthetic and robust hinges for euro groove

Dynamic 3D hinges are composed of three rings with a single connector pin which keeps the hinges perfectly aligned and self-lubricating bushes which ensure lasting and even sliding movements over time.

The whole range of Dynamic 3D have independent adjustments possible by a single person.

Dynamic 3D Ø 20 is suitable for fire doors as all exposed parts are in steel.

Tested over 200.000 movements, Dynamic 3D range is certified CE EN 1935-2002.

Applicable on PVC-U, timber-aluminium, aluminium and timber.  
Dynamic 3D hinges are SFS patented products.



Dynamic 3D Ø 20	4
Dynamic 3D-G	8
Dynamic 3D Ø 20 for Veka profile	12
Dynamic 3DN	16



## Dynamic 3D Ø 20 stable and innovative hinge

### Elegant balance between aesthetics and durability

The new Dynamic 3D Ø 20 mm has been designed to meet the requirements of entrance door producers who require hinges with up to 160 kg capacity. This solid and elegant hinge produced in two versions, one for 16 mm grooves and the other for 20 mm grooves, is produced with all exposed steel parts which ensure durability and applicability on fire doors.

Dynamic 3D Ø 20 mm is composed of three rings with a single connector pin which keeps the hinges perfectly aligned and self-lubricating bushes which ensure lasting and even sliding movements over time.

Adjustable in three dimensions ( +/- 4 mm in height, +/- 3 mm horizontal and +/- 2 mm gasket pressure), with a 4mm single Allen key, this efficient hinge stands out for its quick and easy installation, thanks to the availability of a special drilling jig.

Rigid durability tests performed by SFS intec have proved the hinge can surpass 200,000 movements on 160kg doors.

Dynamic 3D Ø 20 mm is available in a wide range of colours

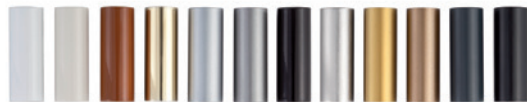
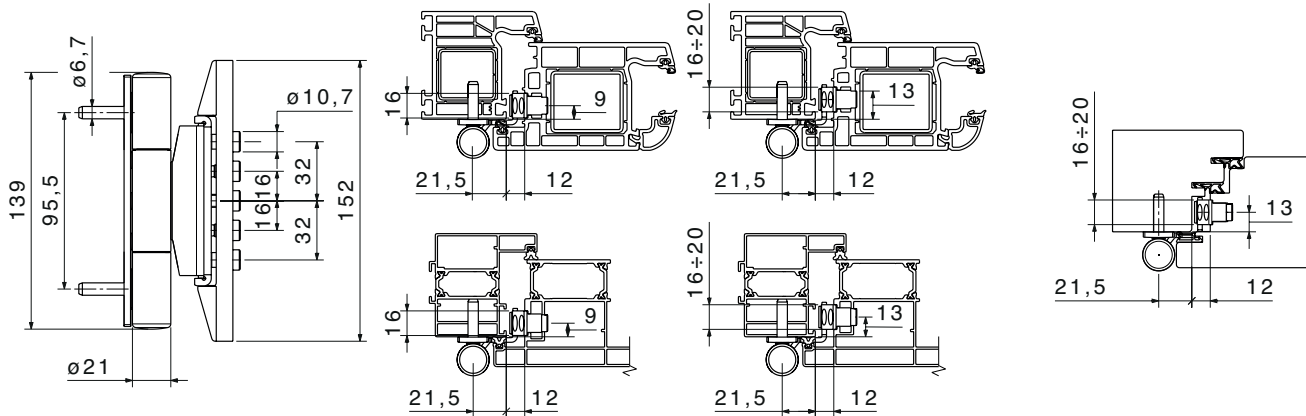






# Description & Accessories

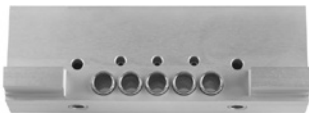
## Dynamic 3D Ø 20



Ordering codes	Dynamic 3D Ø 20 groove 16 mm position 13 mm	Finish	Packaging
1418380	Dynamic 3D Ø 20	Traffic White RAL 9016	3 pcs.
1418829	Dynamic 3D Ø 20	Black Brown RAL 8022	3 pcs.
1418830	Dynamic 3D Ø 20	Powder coated Silver Grey	3 pcs.
1430482	Dynamic 3D Ø 20	Pearl White RAL 1013	3 pcs.
1430481	Dynamic 3D Ø 20	Clay Brown RAL 8003	3 pcs.
1570613	Dynamic 3D Ø 20	Brassed	3 pcs.
1570450	Dynamic 3D Ø 20	Matt Gold	3 pcs.
1570452	Dynamic 3D Ø 20	Light Bronzed	3 pcs.
Ordering codes	Dynamic 3D Ø 20 groove 16 mm position 9 mm	Finish	Packaging
1484376	Dynamic 3D Ø 20	Traffic White RAL 9016	3 pcs.
1484377	Dynamic 3D Ø 20	Black Brown RAL 8022	3 pcs.
1484394	Dynamic 3D Ø 20	Powder coated Silver Grey	3 pcs.
1570454	Dynamic 3D Ø 20	Brassed	3 pcs.
Ordering codes	Dynamic 3D Ø 20 groove 20 mm position 13mm	Finish	Packaging
1422307	Dynamic 3D Ø 20	Traffic White RAL 9016	3 pcs.
1430562	Dynamic 3D Ø 20	Pearl White RAL 1013	3 pcs.
1430561	Dynamic 3D Ø 20	Clay Brown RAL 8003	3 pcs.
1422326	Dynamic 3D Ø 20	Black Brown RAL 8022	3 pcs.
1422327	Dynamic 3D Ø 20	Powder coated Silver Grey	3 pcs.

Load capacity	Dynamic 3D Ø 20
2 hinges	160 kg

### Jig



1548895 | Drilling jig for groove 16/20



www.sfsintec.biz/it/ht022



## Dynamic 3D-G

### the synthesis of design and functionality

The ideal solution for energy saving and continuous gaskets.

Dynamic 3D-G is the new hinge developed and manufactured by SFS to add design and functionality to PVC entrance doors with a continuous gasket.

The desire to save energy and reduce assembly times are key elements that have helped shape the Dynamic 3D-G. Which is now becoming the new benchmark for many door manufacturers.

This 20-mm hinge can be easily front-mounted on heavy-duty entrance doors with a continuous gasket and still maintain all the hallmark characteristics of the Dynamic line in terms of functionality, strength and external design.

With a load capacity of up to 160 kg and suitable for the most common PVC profiles, Dynamic 3D-G stands out with its simple adjustment system using a single Allen key in three dimensions (+/- 4mm in height, +/- 2.5mm horizontal and +/- 1.5mm gasket pressure).

Simple and easy-to-handle, Dynamic 3D-G guarantees SFS traditional quality and durability, having met the stringent durability tests on 160kg doors with over 200,000 movements.

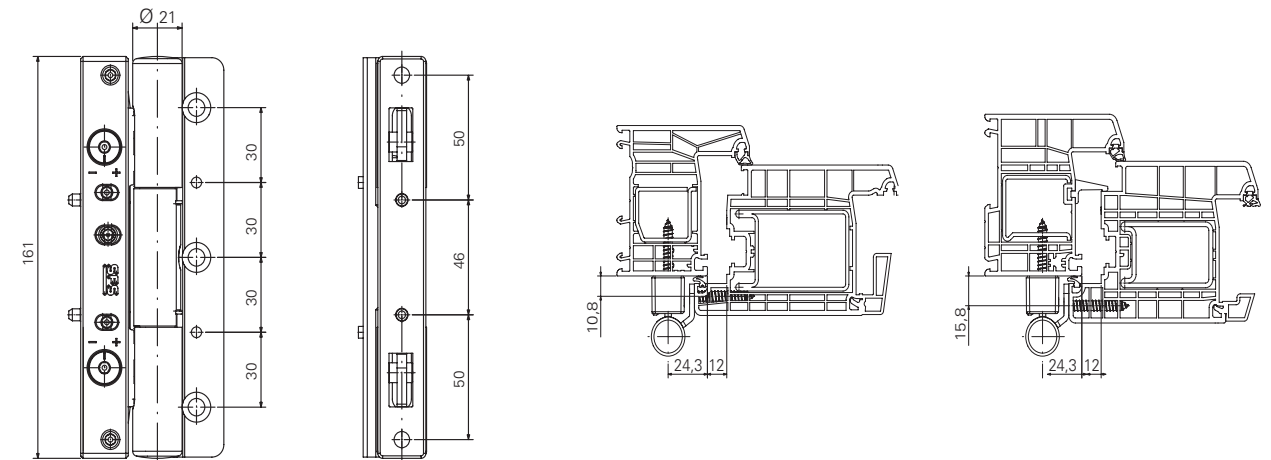






# Description & Accessories

## Dynamic 3D-G



Ordering codes	Dynamic 3D-G overlap ≥ 22mm	Finish	Packaging	Load capacity	Dynamic 3D-G
1644529	Dynamic 3D-G Ø 20	Traffic White RAL 9016	3 pcs.	2 hinges	160 kg
1644665	Dynamic 3D-G Ø 20	Powder coated Silver Grey	3 pcs.		

Ordering codes	Dynamic 3D-G overlap < 22mm	Finish	Packaging
1655737	Dynamic 3D-G Ø 20	Traffic White RAL 9016	3 pcs.
1655757	Dynamic 3D-G Ø 20	Powder coated Silver Grey	3 pcs.

### Jig



1645249	Jig for overlap ≥ 22mm
1661140	Jig for overlap < 22mm
1645248	Rod gauge
1645264	Additional jig for Rod gauge

## Dynamic 3D Ø 20 for Veka profile

Universal hinge for 24mm groove Veka profile

The Dynamic 3D Ø 20 mm has been designed to meet the requirements of entrance door producers who use 24 mm groove Veka profile. This version is also robust and elegant, produced with all exposed steel parts which ensure durability and applicability on fire doors.

Dynamic 3D Ø 20 mm is composed of three rings with a single connector pin which keeps the hinges perfectly aligned and self-lubricating bushes which ensure lasting and even sliding movements over time.

Adjustable in three dimensions ( +/- 4 mm in height, +/- 3 mm horizontal and +/- 2 mm gasket pressure), with a 4mm single Allen key, this efficient hinge stands out for its quick and easy installation, thanks to the availability of a special drilling jig.

Rigid durability tests performed by SFS intec have proved the hinge can surpass 200,000 movements on 160kg doors.

Dynamic 3D Ø 20 mm is available in a wide range of colours.



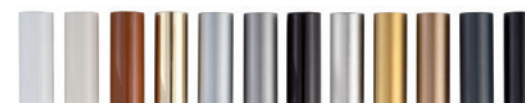
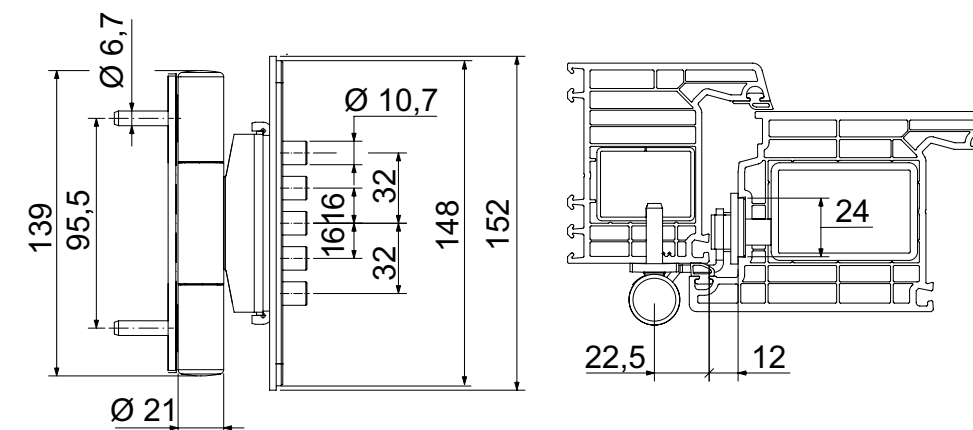
# Dynamic 3D Ø 20 Veka





# Description & Accessories

## Dynamic 3D Ø 20 Veka



Ordering codes	Dynamic 3D Ø 20 groove 24 mm Veka profile	Finish	Packaging	Load capacity	Dynamic 3D Ø 20
				2 hinges	160 kg
<b>1492445</b>	Dynamic 3D Ø 20	Traffic White RAL 9016	3 pcs.		
<b>1511761</b>	Dynamic 3D Ø 20	Black Brown RAL 8022	3 pcs.		
<b>1492446</b>	Dynamic 3D Ø 20	Powder coated Silver Grey	3 pcs.		
<b>1513173</b>	Dynamic 3D Ø 20	Pearl White RAL 1013	3 pcs.		
<b>1513174</b>	Dynamic 3D Ø 20	Clay Brown RAL 8003	3 pcs.		
<b>1570453</b>	Dynamic 3D Ø 20	Brassed	3 pcs.		

### Jig



**1514856** | Drilling jig for groove 24



www.sfsintec.biz/it/ht022



## Dynamic 3DN

### Universal hinge for Eurogroove applications

The Dynamic 3DN is SFS intec's solution for door producers requiring a universal hinge for application into Eurogroove.

Developed for interior doors and windows, produced from different materials such as PVC-U, aluminium or timber, this hinge provides a unique solution to a wide range of applications.

Adjustable in three dimensions: horizontal +/- 3mm, in height -2/+6mm and gasket pressure min +/- 2mm, the three rings ensure high stability and perfect alignment. The installation is also very easy, using a single drill bit and a user friendly jig specifically developed for fast application.

As with all SFS intec hinges, the new Dynamic 3DN achieved over 200.000 cycles, tested using a door of 110Kg, confirming once more the quality standards which our customers are accustomed to.

A wide variety of powder coated and metallic finishes ensure the Dynamic 3DN is suitable for virtually any design, further enhancing the value of your door or window.

# Dynamic

## 3DN

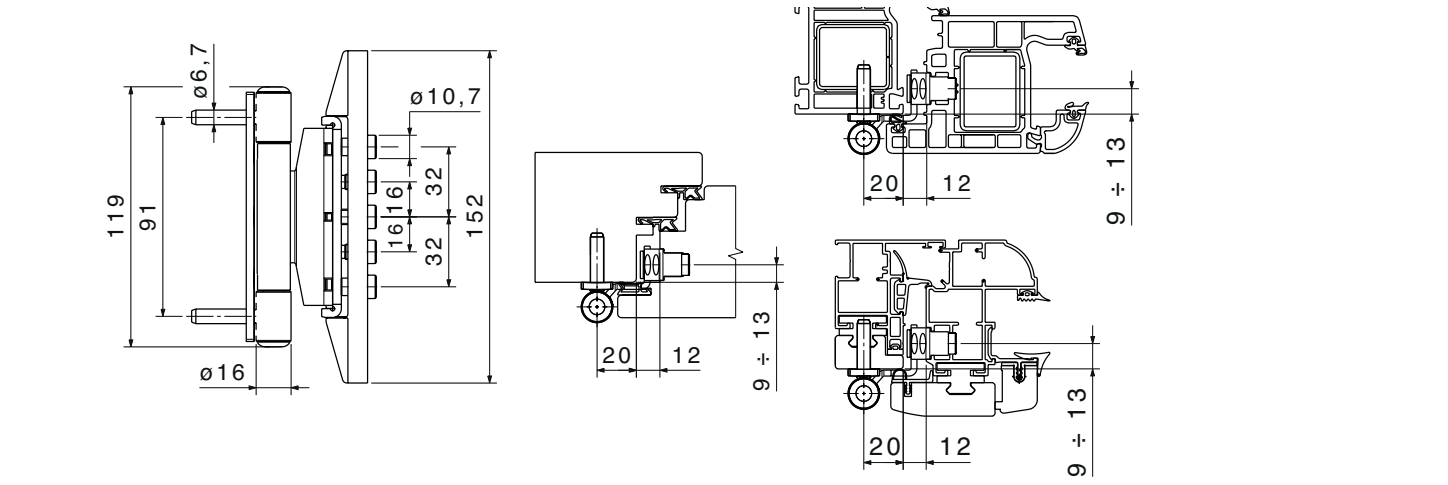
### Ø 16





# Description & Accessories

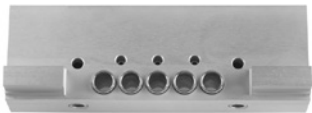
## Dynamic 3DN Ø 16



Ordering codes	Dynamic 3DN Ø 16 groove 16 mm position 13 mm	Finish	Packaging
1542179	Dynamic 3DN Ø 16	Traffic White RAL 9016	12 pcs.
1542184	Dynamic 3DN Ø 16	Black Brown RAL 8022	12 pcs.
1542180	Dynamic 3DN Ø 16	Powder coated Silver Grey	12 pcs.
1563720	Dynamic 3DN Ø 16	Pearl White RAL 1013	12 pcs.
1563723	Dynamic 3DN Ø 16	Clay Brown RAL 8003	12 pcs.
1564873	Dynamic 3DN Ø 16	Brassed	12 pcs.
1564874	Dynamic 3DN Ø 16	Matt Gold	12 pcs.
1564875	Dynamic 3DN Ø 16	Light Bronzed	12 pcs.
1554809	Dynamic 3DN Ø 16	Powder coated Titanium Grey	12 pcs.
Ordering codes	Dynamic 3DN Ø 16 groove 16 mm position 9 mm	Finish	Packaging
1564876	Dynamic 3DN Ø 16	Traffic White RAL 9016	12 pcs.
1564877	Dynamic 3DN Ø 16	Black Brown RAL 8022	12 pcs.
1569573	Dynamic 3DN Ø 16	Powder coated Silver Grey	12 pcs.
1570454	Dynamic 3DN Ø 16	Brassed	12 pcs.
1564879	Dynamic 3DN Ø 16	Pearl White RAL 1013	12 pcs.
1564884	Dynamic 3DN Ø 16	Powder coated Titanium Grey	12 pcs.
1564883	Dynamic 3DN Ø 16	Light Bronzed	12 pcs.

Load capacity	Dynamic 3DN Ø 16
2 hinges	110 kg

### Jig



1550245	Drilling jig for groove 16/20
1552850	Milling jig for timber
1552863	Milling insert sash/frame (cutter Ø 16 and ring Ø 27)
1552862	Milling insert sash/frame (cutter Ø 20 and ring Ø 30)



www.sfsintec.biz/it/ht016





SFS intec S.r.l  
Via Castelfranco Veneto 71  
IT-33170 Pordenone

[it.info@sfsintec.biz](mailto:it.info@sfsintec.biz)  
[www.sfsintec.it](http://www.sfsintec.it)