

SFS

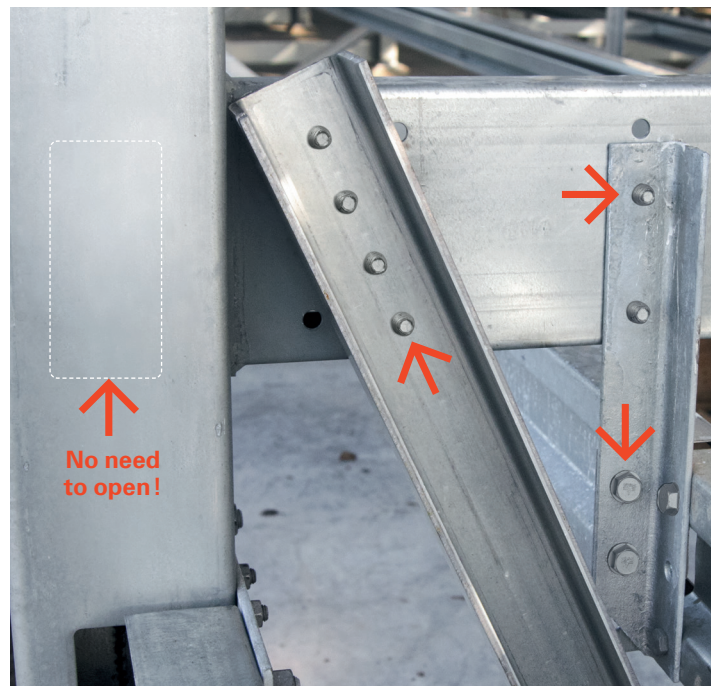
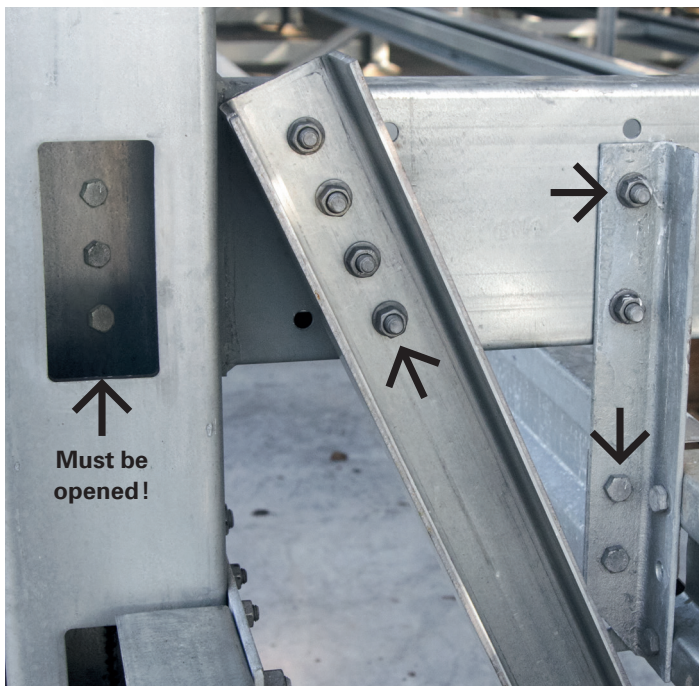
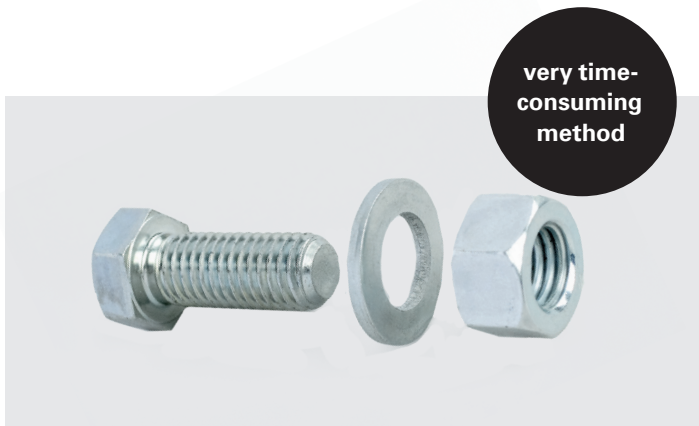


**Self
tapping
fastener
nonut[®]**

Easy, fast and secure connection
of static loaded metal components

It's time for a change of system

Put supporting structures subject to static load together in a faster and more efficient manner with the secure, direct screw connection.



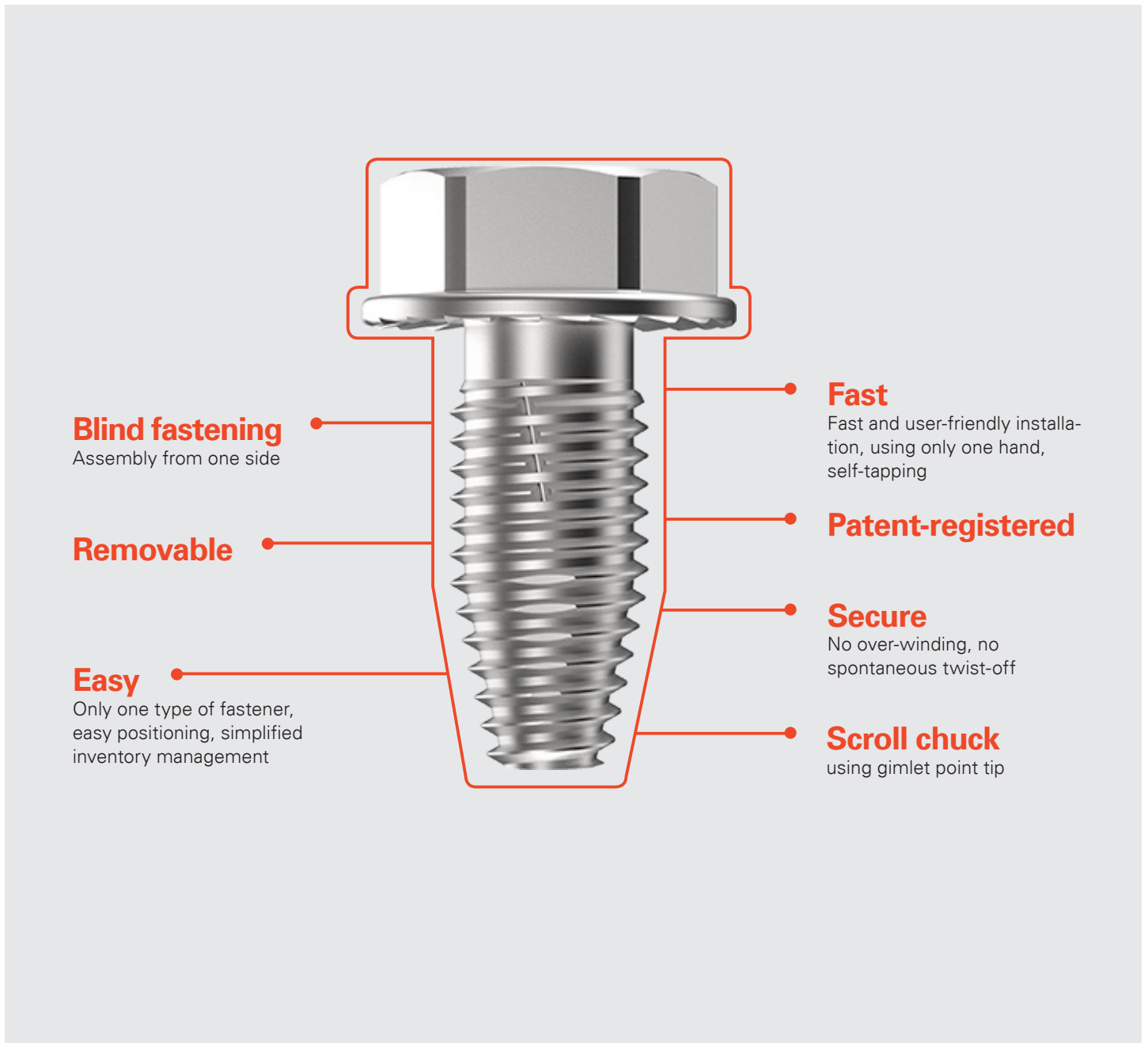
Previously time-consuming method

Before, putting pre-drilled supports together had been complicated and time-consuming, requiring the use of standard bolts, washers and nuts. The connection had to be accessible from both sides.

New, simple direct connection

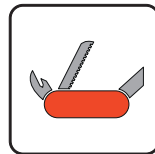
The self-threading fastener, nonut® is inserted into the punched hole and effortlessly driven in using a cordless tangential impact driver.

Convincing Features



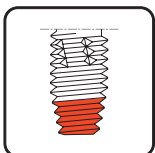
Non-removable

- With locking teeth
- Thread pairing free of play



User friendly

- One screw and one tool = fitted with one hand



Self-tapping

- Non-cutting
- Nut or reaming omitted



Approval

- Certified product with EU approval
ETA-11/0191

Typical areas of application

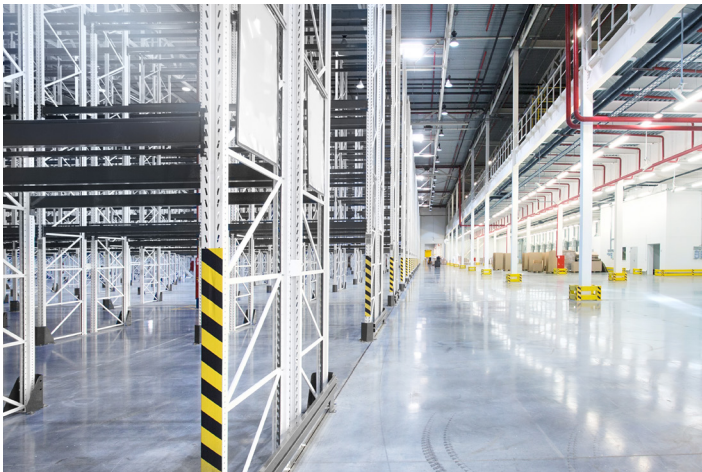
High rack construction



Steel construction for PV-sites



Platform construction



Shelf construction



Steelwork



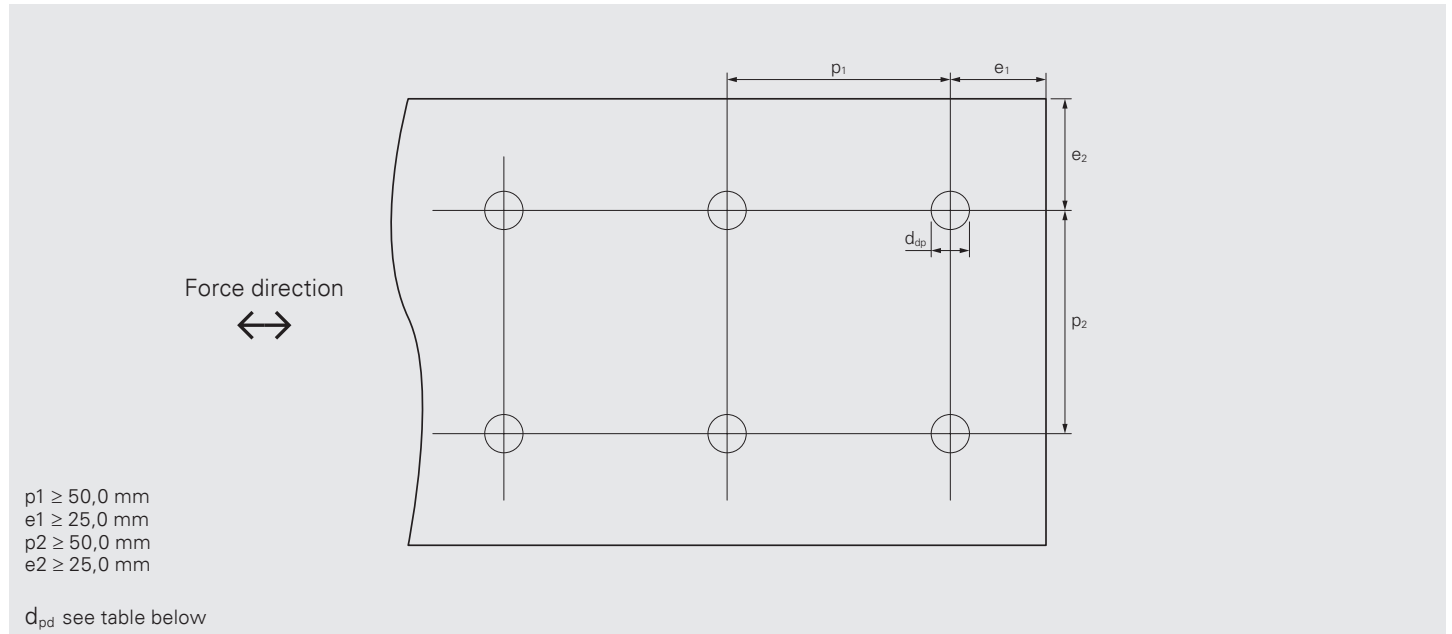
Lightweight construction



Application range

Edge and corner distances

The following minimum edge and center distances apply:

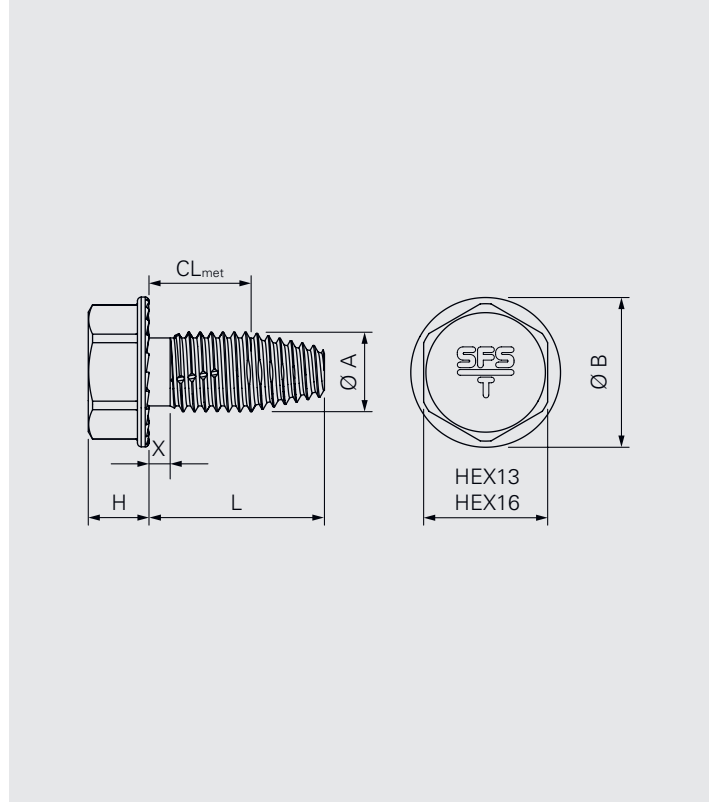
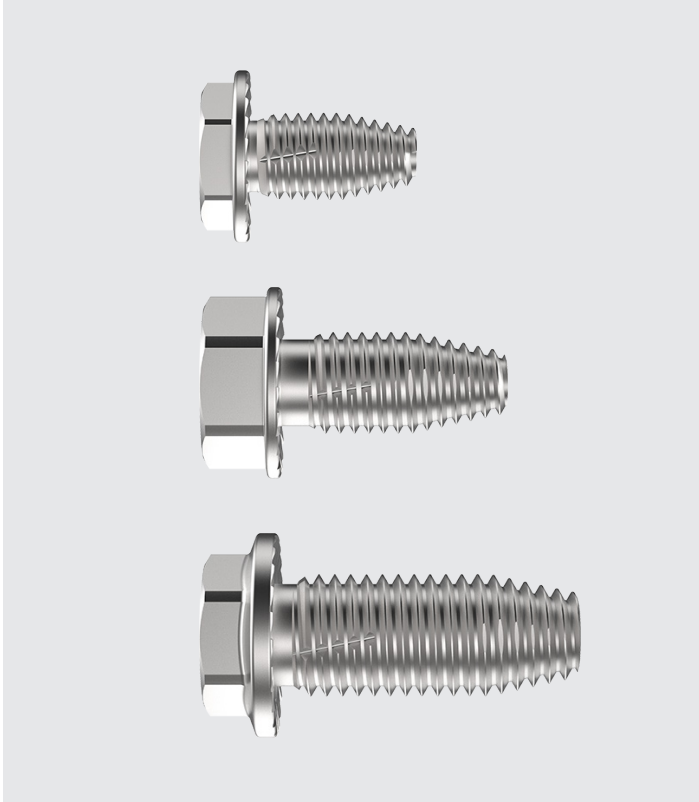


Component combinations and pilot bore diameter acc. to ETA-11/0191

nonut®-TDBL/TDBLF Ø (Screw type acc. to ETA-11/0191)	Thickness of connected elements		Pre-drilling Ø	
	Component I: t_I	Component II: t_{II}	Component I	Component II
8.6	0.88–3.0	0.88–3.0	7.5	7.5
		≥ 3.0	8.0	8.0
	2×0.88–2×2.0	0.88–3.0	6.5×10	7.5
		≥ 3.0		8.0
	0.88–2.0	≥ 0.88	6.5×10	6.5×10
	2×0.88–2×2.0	≥ 3.0		6.5×10
10.6	2×0.88–2×2.0	≥ 3.0	10.0	10.0
		≥ 3.0	8.5×28.5	9.0
	0.88–4.0	1.0–3.0		9.0
	1.0–4.0	1.0–3.0	9.0	
		5.0–17.0	3.0–15.0	10.0
				12.0
13.4	1.0–4.0	1.5–6.0	12.5	12.5
		5.0–19.0	13.0	13.0
	5.0–17.0	3.0–5.0	15.0	12.5
		5.0–15.0		13.0

Product overview

nonut® TDBL



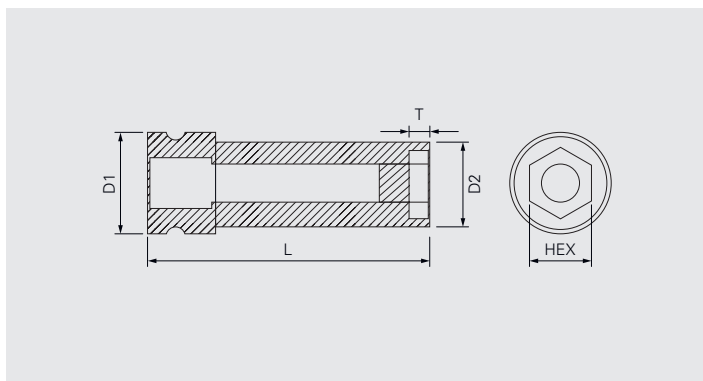
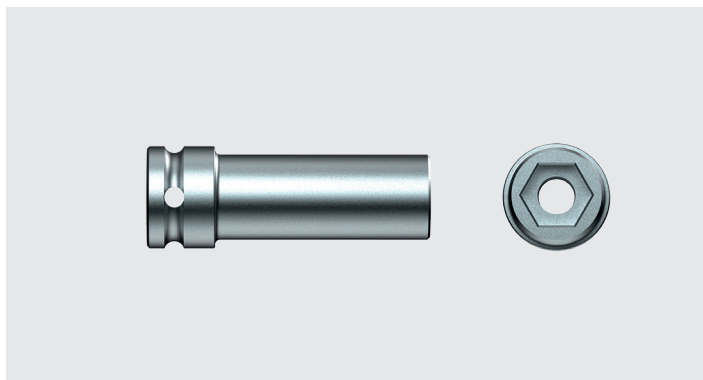
Self-tapping fastener

for fastening in steel, steel grades up to S355, S450GD, HX460LAD

Product code	VPE	L	CL _{met}	Head drive	Ø A	Ø B	x	H	Mat.-No.
nonut®-TDBL-T-8,6×16	200	16	0-9	HEX13	8.60	16.0	2.0	7	1542214
nonut®-TDBLF-T-F-8,6×16*							<1.0	4.7	1541860
nonut®-TDBL-T-8,6×50	100	50	0-43				3.0	7	1607124
nonut®-TDBL-T-10,6×23	100	23	0-13	HEX16	10.60	20.0	3.0	8	1542223
nonut®-TDBLF-T-10,6×23							<1.50		1542229
nonut®-TDBL-T-10,6×30		30	0-20				3.0	1542217	
nonut®-TDBL-T-10,6×50		50	0-40					1561761	
nonut®-TDBLF-T-13,4×23	100	23	0-13	HEX16	13.40	22.0	<2.0	8	1589570
nonut®-TDBLF-T-13,4×33		33	0-23						1592605

*Flat head

Accessories



Use of impact screw gun with magnet
to securely hold the fastener, supports installation with one hand

Setting tool



Tangential impact screw gun
maximum torque depending on use 150–500 Nm

Product code	VPE	Drive	Head drive	L	T	D1	D2	Mat.-No.	
E313-¼"-50	1	¼" hex.	HEX13	50	6	-	20	508029	
E416-½"-38			HEX16	38	7	30	24	1389740	
E513-½"-78		HEX13	78	8	25	21	1649258		
E516-½"-78		HEX16			30	25	1649256		
E516-½"-78-red					22	22	1649257		
ZAW-½"-75		½" sq.	75	-	25	16	1684227		
ZAW-½"-150							150	1684205	

